


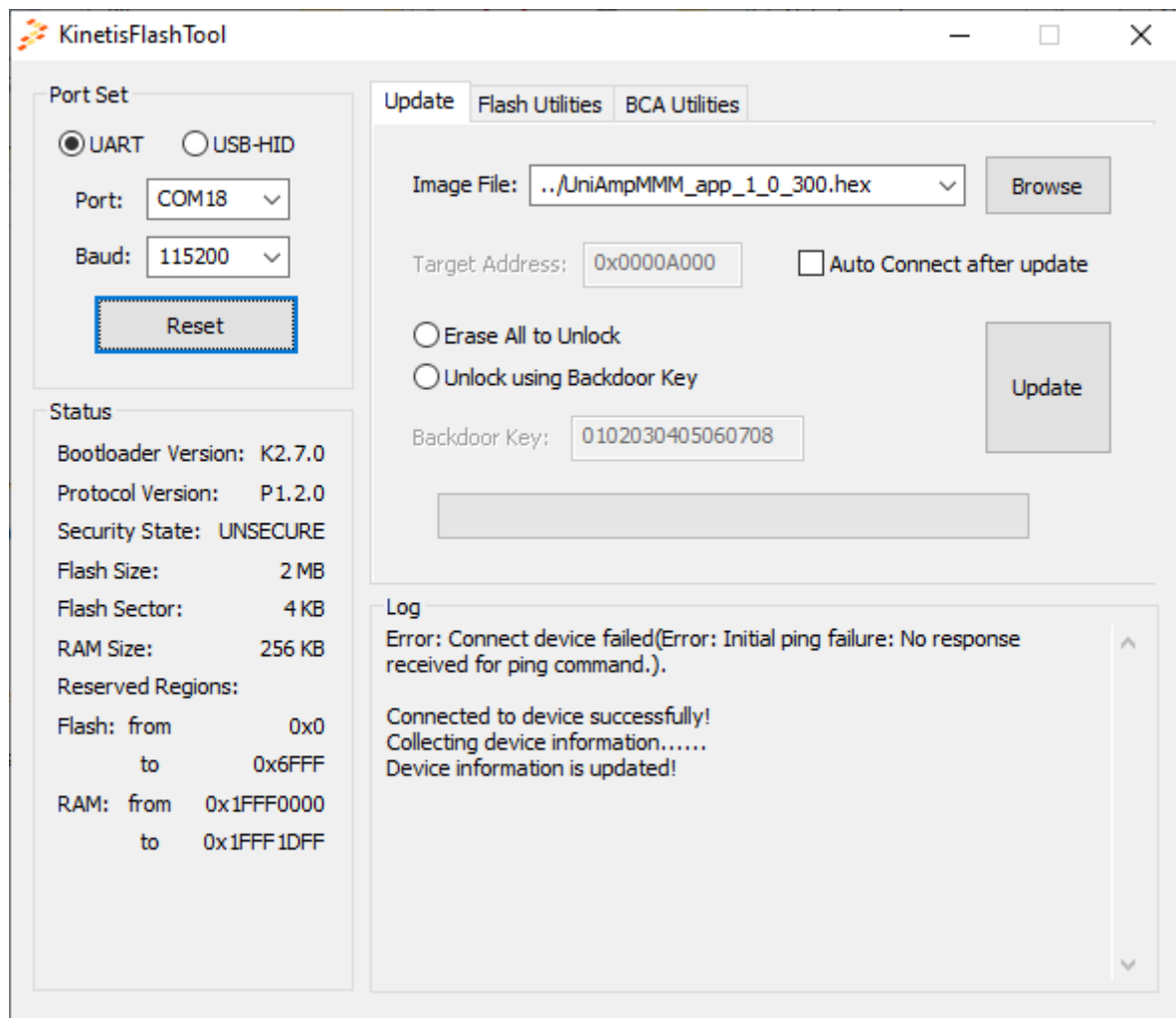
UniAmp Multimeter and Single Channel Update Guide

This step-by-step guide describes the procedure to update the firmware on the UniAmp Multimeter and Single Channel instruments. Please follow the guide carefully and contact Unisense if you have any doubts.

1. Install SensorTrace Suite on the PC if it is not already installed.
2. Disconnect the UniAmp device from the PC.
3. Stop the "Unisense UniAmp Service" by:
 - right clicking on the Unisense UniAmp icon in system tray
 - select UniAmp Service>Stop
4. Open Kinetis Flash Tool in the unzipped folder ("flash_tool/KinetisFlashTool.exe")
5. Ensure "Baud" is set to 115200.
6. Note which Com-ports are listed in "Port"
 - If the list is empty just proceed.
7. Connect UniAmp Device to the PC.
8. A new Com-port will appear in the port list. Select the port and click connect.
9. Often Kinetis flash tool will show an error message once before connecting to the device.
"Error: Connect device failed (Error: Initial ping failure: No response received for ping command.)".
10. When the device as enter Firmware Update mode:
 - KinetisFlashTool displays "Connected to device successfully!"
 - The green UniAmp front LED turns off.
11. The error message "Error: Connect device failed(Error: UartPeripheral() cannot open PC UART port(COM3), speed(115200 Hz).)" implies that the device is occupied.
 - In this case, enter the Windows Task Manager and select the TAP called 'Services'
 - Scroll down to the service called Unisense UniAmp Service.

 UniAmpWindowsService	11712	Unisense UniAmp Service
--	-------	-------------------------

 - Right-click on the service and select 'Stop'.



12. Once connected to the UniAmp Device click Browse in the upper right corner and select the firmware file ("UniAmpMMM_app_VERSION.hex") from the unzipped folder.
13. Click "Update"
 - It takes a little while for the update to be implemented.
14. Start the "Unisense UniAmp Service" by:
 - right clicking on the Unisense UniAmp icon in system tray
 - select UniAmp Service>Start
 - Alternatively, restart the computer.
15. Disconnect and reconnect the UniAmp device. Open "Logger.exe" and start a new experiment using the UniAmp device. In the "Comments" tap, verify that the device is registered with the new firmware version.